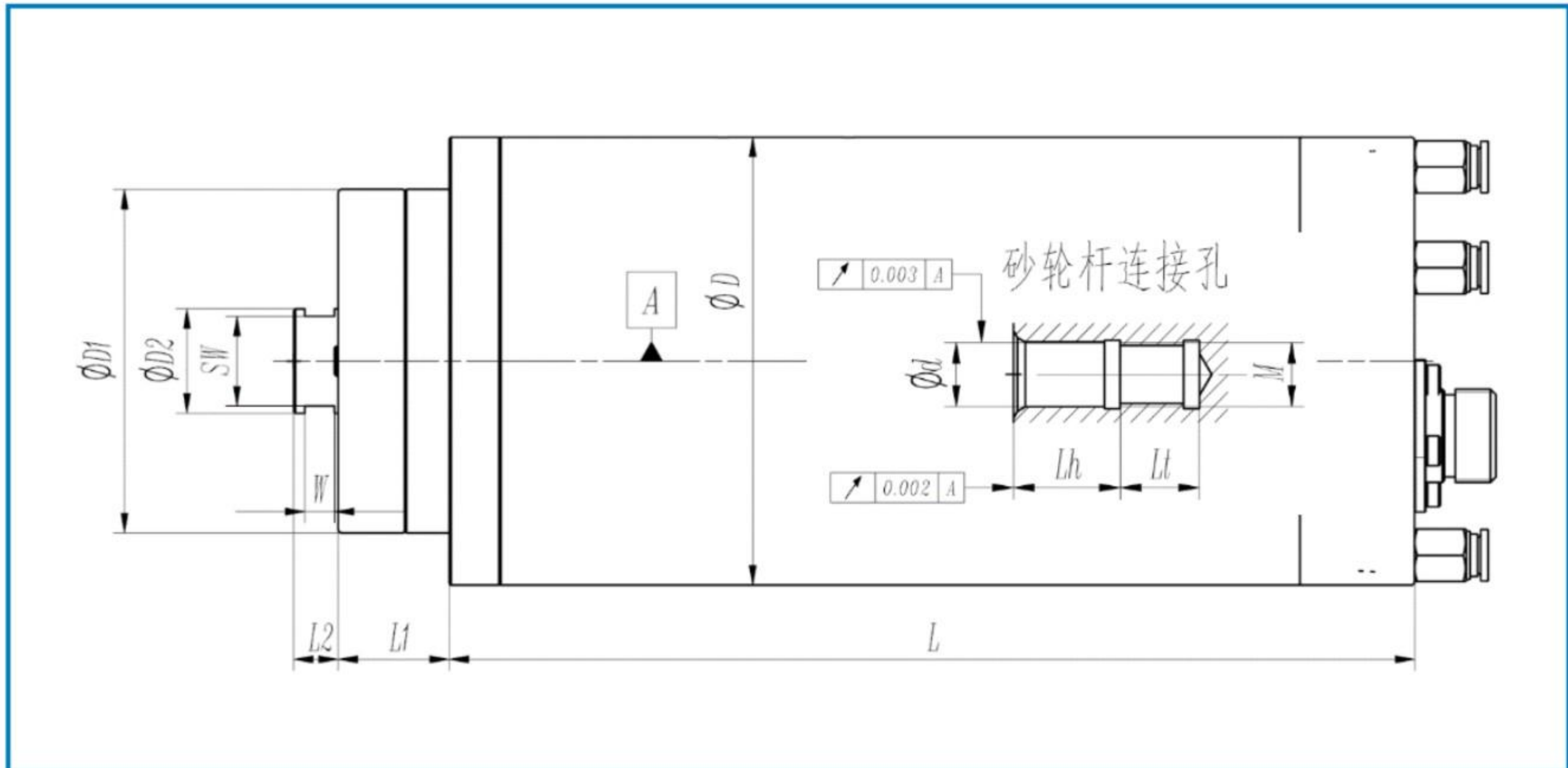


Model	80MD120Y1.5	100MD90Y2.5	100MD60Y9	100MD60Y4	120MD36Y8.5	120MD48Y5.8
Speed(r/min)	120000	90000	60000	60000	36000	48000
Power(S1,kW)	1.5	2.5	7.5	2.5	5.3	3.6
Power(S6-60%,kW)	2	3	9	4	8.5	5.8
Torque(S1,Nm)	0.12	0.27	1.2	0.4	1.4	0.7
Torque(S6-60%,Nm)	0.16	0.32	1.4	0.6	2.3	1.2
Voltage(V)	380	350.0	350.0	350	350.0	350.0
Frequency(Hz)	2000	1500	2000	1000	600	800
Current(A)	3.5	7.5	19.0	6.3	11.0	9.0
Max current(A)	5	8	22	10	18	15
Motor type	induction	induction	induction	induction	induction	induction
Motor sensor	Optional	Optional	Optional	Optional	Optional	Optional
Front bearig	7001	7004	7006	7003	7006	7005
rear bearing	7000	7003	7004	7003	7005	7004
D(mm)	80	100	100	100	120	120
L(mm)	109	198	228	185	255	230
D1(mm)	79.9	79	99.9	66	92	80
L1(mm)	26	36	38	24	30	23
D2(mm)	10	18	27	16	28	23
L2(mm)	8	10	10	8	12	14
d(mm)	5	10	16	8	16	14
Lh(mm)	8	15	24	13	27	24
M(mm)	M5	M10*1.5	M16*1.5	M8*1	M16*1.5	M14*1.5
lt(mm)	5	19	19	15	20	19
SW(mm)	9	16	24	14	24	19
W(mm)	5	7	7	12	8	8
Lubrication	Oil air	Oil air	Oil air	Oil air	Oil air	Oil air
Cooling	Water	Water	Water	Water	Water	Water

地址：洛阳高新技术产业开发区滨河北路22号

No. 22 Binhe Road, Luoyang hi-tech industrial development zone

Web: <http://www.lysuf.com> Email: zysxrf@126.com

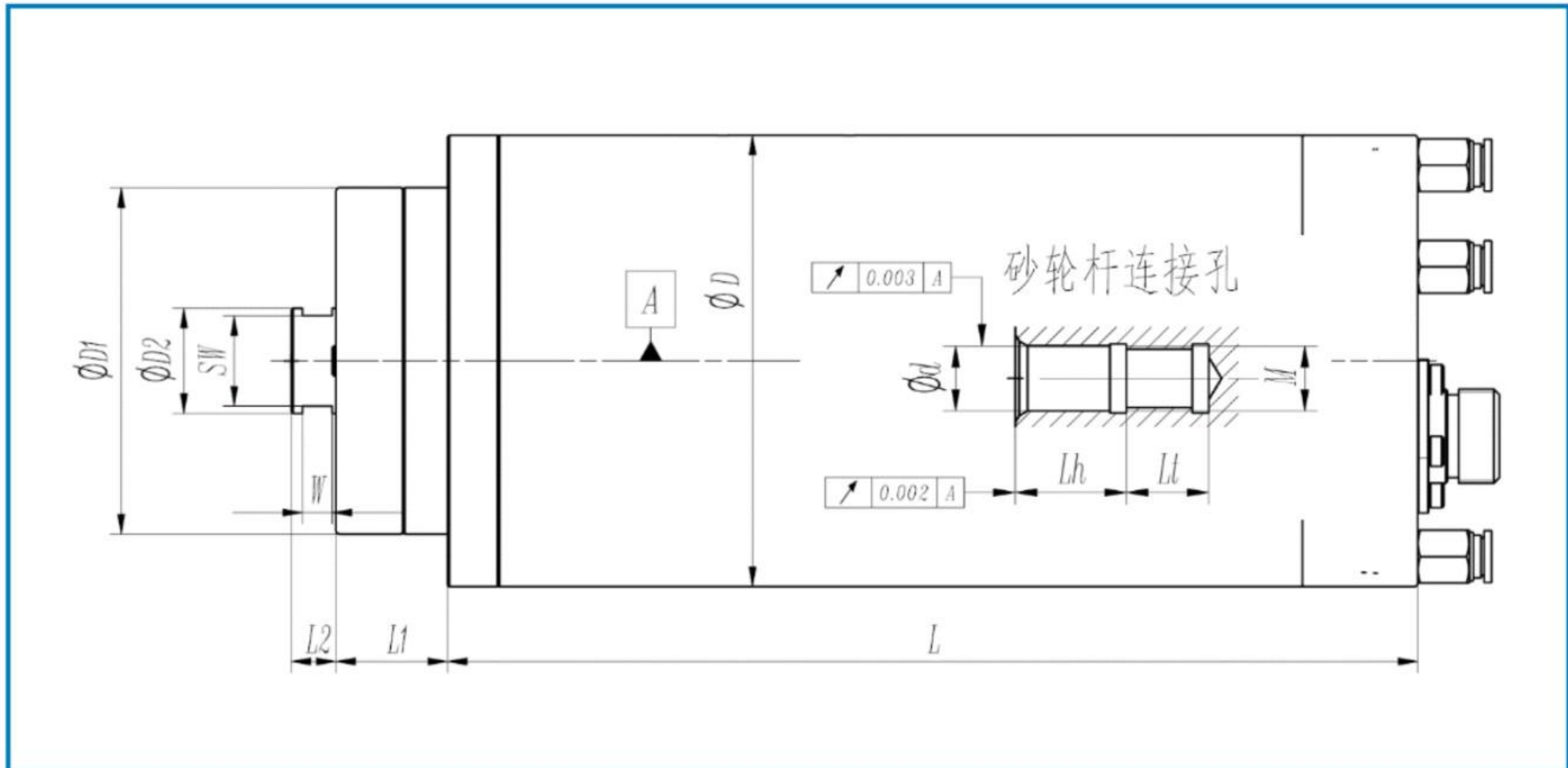


Model	120MD45Y15	120MD24Y12	150MD18Y14.5	150MD24Y12.5	150MD24Y16
Speed(r/min)	45000	24000	18000	24000	24000
Power(S1,kW)	11	12.0	9	7.8	10
Power(S6-60%,kW)	15	15	14.5	12.5	16
Torque(S1,Nm)	2.3	4.8	4.8	3.1	4.0
Torque(S6-60%,Nm)	3.2	6.0	7.7	5.0	6.4
Voltage(V)	350	350.0	350	350.0	350
Frequency(Hz)	1500	800	600	400	800
Current(A)	26	30.0	23	16.0	23
Max current(A)	33	38	38	26.7	38
Motor type	induction	induction	induction	induction	induction
Motor sensor	Optional	Optional	Optional	Optional	Optional
Front bearig	71909	7009	7009	7008	7009
rear bearing	7006	7006	7008	7007	7007
D(mm)	120	120	150	150	150
L(mm)	267	300	327	310	320
D1(mm)	100	119.9	110	98	105
L1(mm)	44	30	38	32	30
D2(mm)	41	43	43	38	43
L2(mm)	13	10	22	19	18
d(mm)	28	22	25	22	25
Lh(mm)	42	38	40	38	42
M(mm)	M28*2	M22*2	M25*2	M22*2	M25*2
lt(mm)	28	24	30	26	25
SW(mm)	38	41	36	32	36
W(mm)	10	7	14	14	14
Lubrication	Oil air	Oil air	Oil air	Oil air	Oil air
Cooling	Water	Water	Water	Water	Water

地址：洛阳高新技术产业开发区滨河北路22号

No. 22 Binhe Road, Luoyang hi-tech industrial development zone

Web: <http://www.lysuf.com> Email: zysxrf@126.com



Model	150MD30Y23	170MD12Y20	170MD15Y20	170MD18Y16
Speed(r/min)	30000	12000	15000	18000
Power(S1,kW)	23.0	12.5	12.5	10
Power(S6-60%,kW)	30	20	20	16
Torque(S1,Nm)	7.3	9.9	8.0	5.3
Torque(S6-60%,Nm)	9.6	15.9	12.7	8.5
Voltage(V)	350	350.0	350.0	350
Frequency(Hz)	1000	400	500	600
Current(A)	46	25.0	27.8	21
Max current(A)	55	41.5	46.3	35
Motor type	induction	induction	induction	induction
Motor sensor	Optional	Optional	Optional	Optional
Front bearig	7009	7011	7011	7009
rear bearing	7006	7009	7009	7008
D(mm)	150	170	170	170
L(mm)	337	370	320	305
D1(mm)	121	124	116	110
L1(mm)	41	40	38	40
D2(mm)	43	53	53	43
L2(mm)	16	22	17	22
d(mm)	28	36	32	25
Lh(mm)	47	40	50	42
M(mm)	M28*2	M33*2	M32*2	M25*2
lt(mm)	25	30	25	24
SW(mm)	38	50	46	36
W(mm)	13	12	14	13
Lubrication	Oil air	Oil air	Oil air	Oil air
Cooling	Water	Water	Water	Water

地址：洛阳高新技术产业开发区滨河北路22号

No. 22 Binhe Road, Luoyang hi-tech industrial development zone

Web: <http://www.lysuf.com> Email: zysxrf@126.com